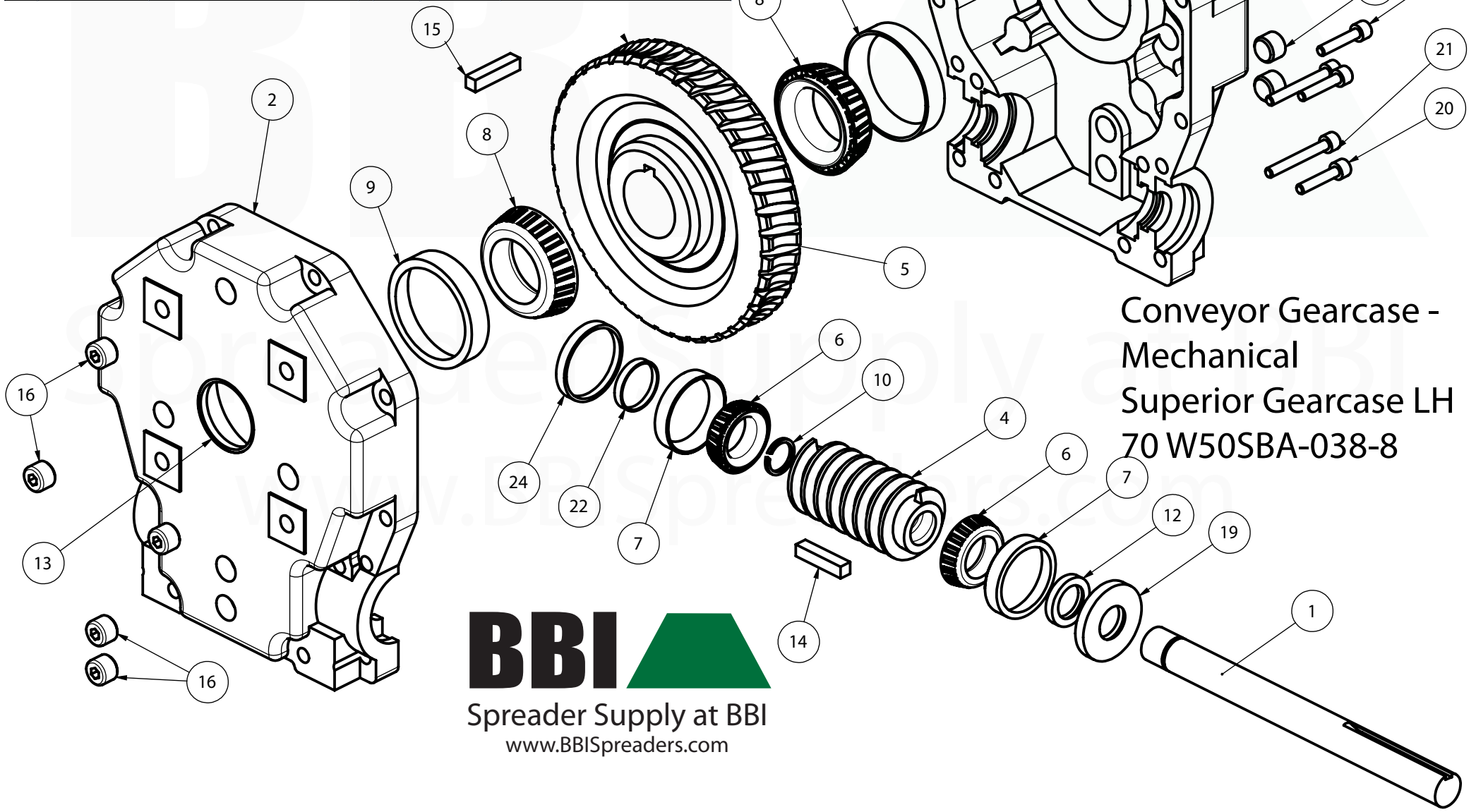


1	70W00100-16	Input shaft	13	70819762	Output Shaft Seal (20263TL-H)
2	70W00001-0	Housing	14	70W00200	Key (1/4" x 3") for Worm Gear
3	70W00002-0	Housing side with vent hole	15	70W00201	Key (3/8" x 2") for Brass Gear
4	70W26L01-01	Worm Gear Left Hand	16	70400300	NPT Hex Plug (1/2")
4	70W26R01-01	Worm Gear Right Hand	17	701003VB	NPT Hex Bushing (1/2" x 1/8")
5	70W26L50-0	Brass Gear Left Hand	18	702003PR	Vent Plug (1/8")
5	70W26R50-0	Brass Gear Right Hand	19	70W26232	Input Dust Seal
6	70W15101	Input Bearing	20	70203815	Housing Bolt (3/8" x 1 1/2")
7	70W15245	Input Race	21	70438225	Housing Bolt (3/8" x 2 1/4")
8	70804949	Output Bearing (LM 104949)	22	70200301	Small Input Plug
9	70804911	Output Race (LM 104911)	23	70226262	Output Plug (2 5/8")
10	70203293	1" Input Shaft Retainer Ring	24	70W26231	Input Plug (1 1/2")
12	70209843	Small Input Seal (10142TC)	SGKit	70SGKit	SG Gearcase Seal Kit Complete

# 70 W50SBA-038-8



Conveyor Gearcase -  
 Mechanical  
 Superior Gearcase LH  
 70 W50SBA-038-8